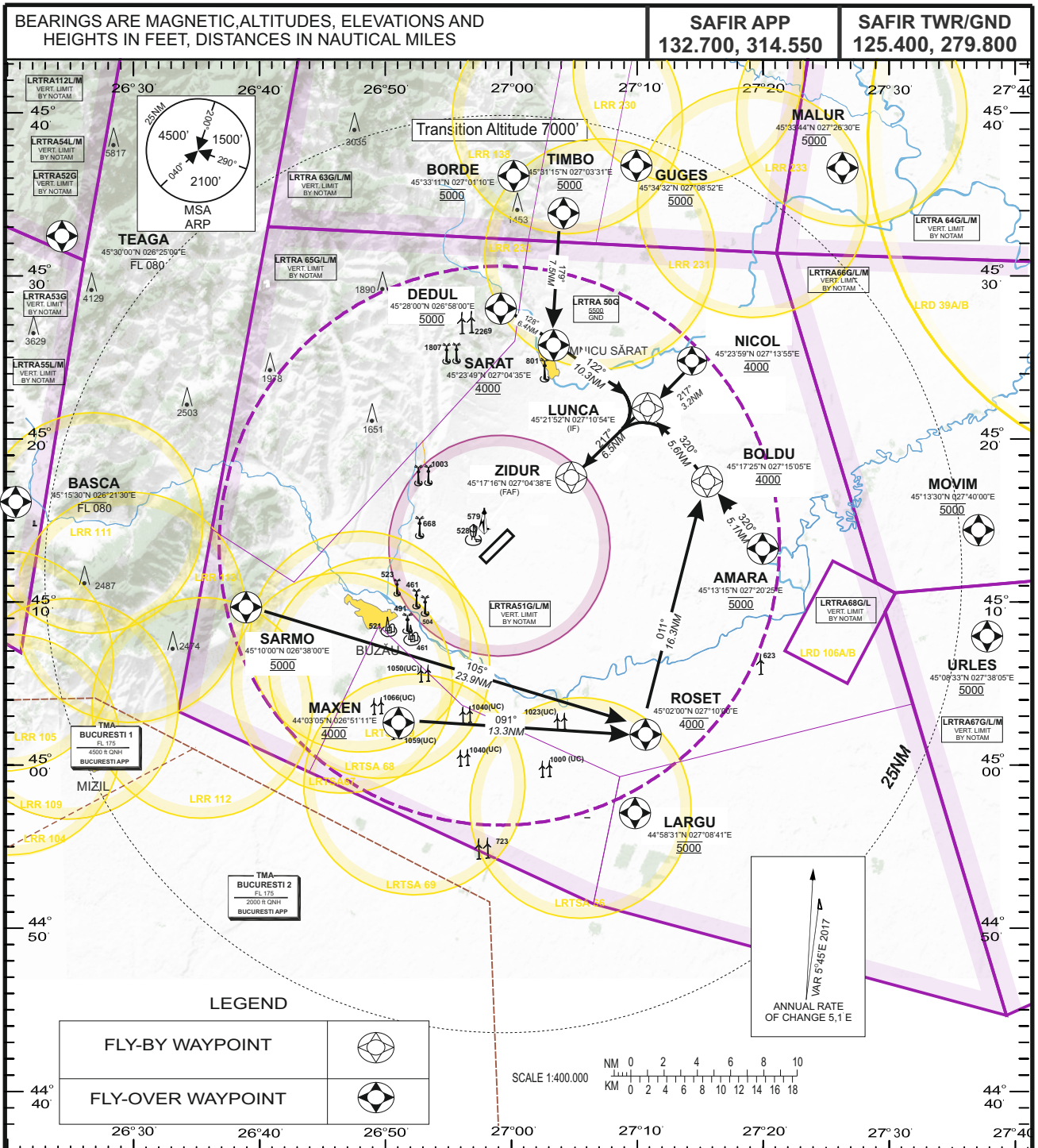


RNAV<sub>(GNSS)</sub> STANDARD IFR ARRIVAL CHART

BOBOC (LRBO)  
RWY 22

AMARA 1D, DEDUL 1D, MAXEN 1D, NICOL 1D, ROSET 1D, SARMO 1D, TIMBO 1D



AMARA 1D - Track 320° to BOLDU and descend to 4000 ft QNH, track 320° to LUNCA and descend to 3000 ft QNH.
DEDUL 1D - Track 128° to SARAT and descend to 4000 ft QNH, turn left track 122° to LUNCA and descend to 3000 ft QNH.
MAXEN 1D - Track 091° to ROSET, continue ROSET 1D
NICOL 1D - Track 217° to LUNCA and descend to 3000 ft QNH.
ROSET 1D - Track 011° to BOLDU and descend to 4000 ft QNH, turn left track 320° to LUNCA and descend to 3000 ft QNH.
SARMO 1D - Track 105° to ROSET, continue on ROSET 1D
TIMBO 1D - Track 179° to SARAT and descend to 4000 ft QNH, turn left Track 122° to LUNCA and descend to 3000 ft QNH.

NOTE: 1. LRR101, LRR102, LRR103, LRR104, LRR105, LRR106, LRR107, LRR108, LRR109, LRR110, LRR111, LRR112, LRR113, LRR130, LRR138, LRR230, LRR231, LRR232, LRR233 are anti-hail Rocket firing areas, vertical limits from GND to FL 255, active by NOTAM.  
2. LRTSA59, LRTSA66, LRTSA67, LRTSA68, LRTSA69, LRD39, LRD106 are military exercise and training areas. Dates, times and vertical limits are issued by NOTAM.

<b>CO-ORDINATES</b>	
AMARA	45° 13'15" N 027°20'25" E
BASCA	45° 15'30" N 026°21'30" E
BOLDU	45° 17'25" N 027°15'05" E
BORDE	45° 33'11" N 027°01'10" E
DEDUL	45° 28'00" N 026°58'00" E
GUGES	45° 34'32" N 027°08'52" E
LARGU	44° 58'31" N 027°08'41" E
LUNCA(IF)	45° 21'52" N 027°10'54" E
MALUR	45° 33'44" N 027°26'30" E
MAXEN	45° 03'05" N 026°51'11" E
MOVIM	45° 13'30" N 027°40'00" E
NICOL	45° 23'59" N 027°13'55" E
ROSET	45° 02'00" N 027°10'00" E
SARAT	45° 23'49" N 027°04'35" E
SARMO	45° 10'00" N 026°38'00" E
TEAGA	45° 30'00" N 026°25'00" E
TIMBO	45° 31'15" N 027°03'31" E
URLES	45° 08'33" N 027°38'05" E
ZIDUR(FAF)	45° 17'16" N 027°04'38" E

### **RADIO COMMUNICATION FAILURE**

Set transponder to 7600 then:

a) If STAR was assigned or received by ATC, set transponder 7600, proceed according to FPL and assigned STAR and execute a published instrument approach procedure. Descending shall be executed in accordance with vertical restrictions specified on chart.

b) If STAR was assigned or received by ATC and vectoring was initiated, set transponder 7600 and continue on assigned heading and last cleared and acknowledge altitude for 2 min. from setting 7600. Then proceed direct to IF and execute a published instrument approach procedure. Descending shall be executed in accordance with the vertical restrictions specified on chart.

c) If STAR was not assigned or received by ATC, set transponder 7600, proceed according to FPL and FPL STAR and execute a published instrument approach procedure. Descending shall be executed in accordance with vertical restrictions specified on chart after 2 min. from setting 7600.